



高雄醫學大學  
KAOSIUNG MEDICAL UNIVERSITY



# INSPIRE TALENTS

We welcome apples of all kinds  
from every corner.



#### LEADERSHIP

KMU, the maker of  
Guidance for hepatitis  
C treatment.



#### HUMANISM

KMU, the value  
guardian of medical  
humanities.



#### MULTITALENT

KMU, the best interdisciplinary  
medical academy in the  
Asia Pacific.



# Kaohsiung Medical University Faculty Member Recruitment

February 2021

# CONTENTS

- Overview of KMU
- Research Highlights
- Support for Faculty Member
- Contact Info



高雄醫學大學  
KAHSIUNG MEDICAL UNIVERSITY

## INSPIRE TALENTS

We welcome apples of all kinds  
from every corner.



### LEADERSHIP

KMU, the maker of  
Guidance for hepatitis  
C treatment.



### HUMANISM

KMU, the value  
guardian of medical  
humanities.



### MULTITALENT

KMU, the best interdisciplinary  
medical academy in the  
Asia Pacific.





# Kaohsiung Medical University



- 23 Million Population
- 36,000 Square Kilometers
- 3/5 Mountainous Area
- 268 Peaks over 3,000 Meters





Population: 2.77 Million

Area: 2,952 Square Kilometers

Tropical Savanna Climate

**One of the Best Livable Communities by UNEP**

**One of the 10 Bests in Travel by Lonely Planet**

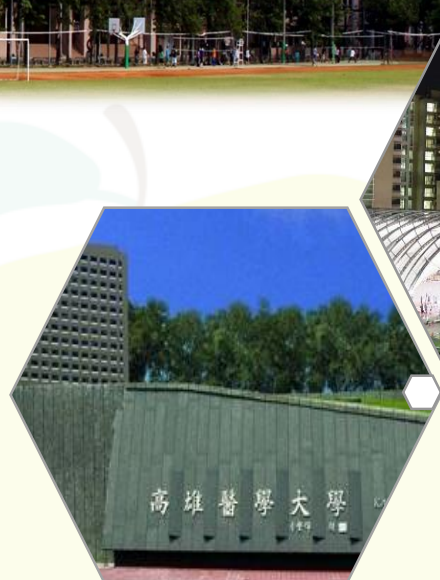
**One of the 52 Places to Love by the New York Times**

**Kaohsiung Harbor**  
**The Largest One in TAIWAN**





# Kaohsiung Medical University



高雄醫學大學  
Kaohsiung Medical University

INSPIRE  
TALENTS  
5

# Founder



**Prof. Tsung-Ming Tu**  
(1893-1986)  
**KMU's 1<sup>st</sup> President**  
**MD, National**  
**Taiwan University**  
**PhD, Kyoto**  
**University, Japan**

**Pharmacologist**

**Traditional Chinese Medicine,**  
**Snake Toxin & Opium**

# Vision

**A World-class Medical University**  
**Promoting Human Health and Well-Being**



# Core Values

**Respect for life · Pursuit of Truth**



# 1954

**Kaohsiung Medical College,**  
**the First Private Medical**  
**School in Taiwan**



**高雄醫學大學**  
Kaohsiung Medical University

**INSPIRE**  
**TALENTS**  
6

# 2021 World University Rankings



701-750



801-1000



701-800 (2020)



**THE University Impact Ranking: 201-300**

## Ranking by Subject



- Pharmacy and Pharmacology: 201-250
- Medicine: 251-300



- Clinical, pre-clinical and health: 251-300





# KMU at A Glance

- Faculty Members (Full-time): 538
- Students (Undergraduate and Graduate Students): 6,475
- Students to Faculty Members Ratio: 10.84

## 7 Colleges + Center for General Education

- Medicine, Dental Medicine, Pharmacy, Nursing, Health Sciences, Life Science, Humanities and Social Sciences, Center for General Education

## 22 Departments

- **2** Two-year In-service Bachelor's Programs, **22** Master's Programs
- **7** In-service Master's Programs, and **10** PhD Programs, **1** Post-baccalaureate Program

## 10 Independent Programs

- **5** Master's Programs and **5** PhD Programs



# 4 Academic Research Centers

## Environmental Medicine

Food Safety, Air pollution, Health,  
Environmental Exposure

## Regenerative Medicine and Cell Therapy

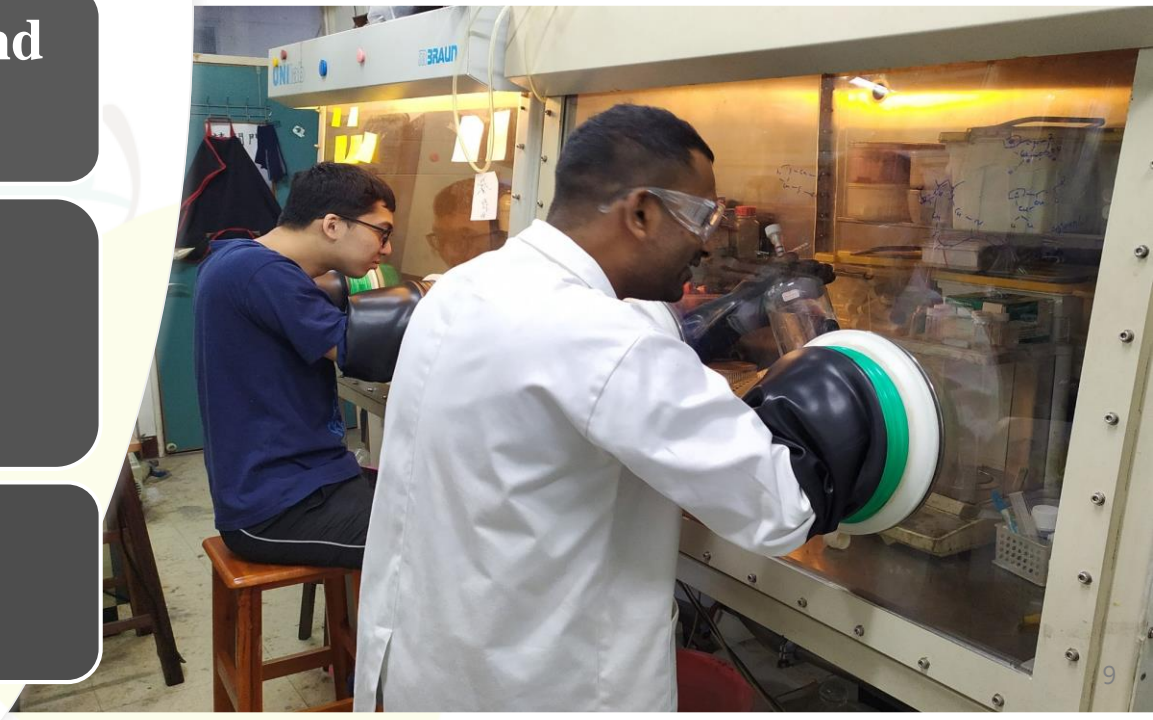
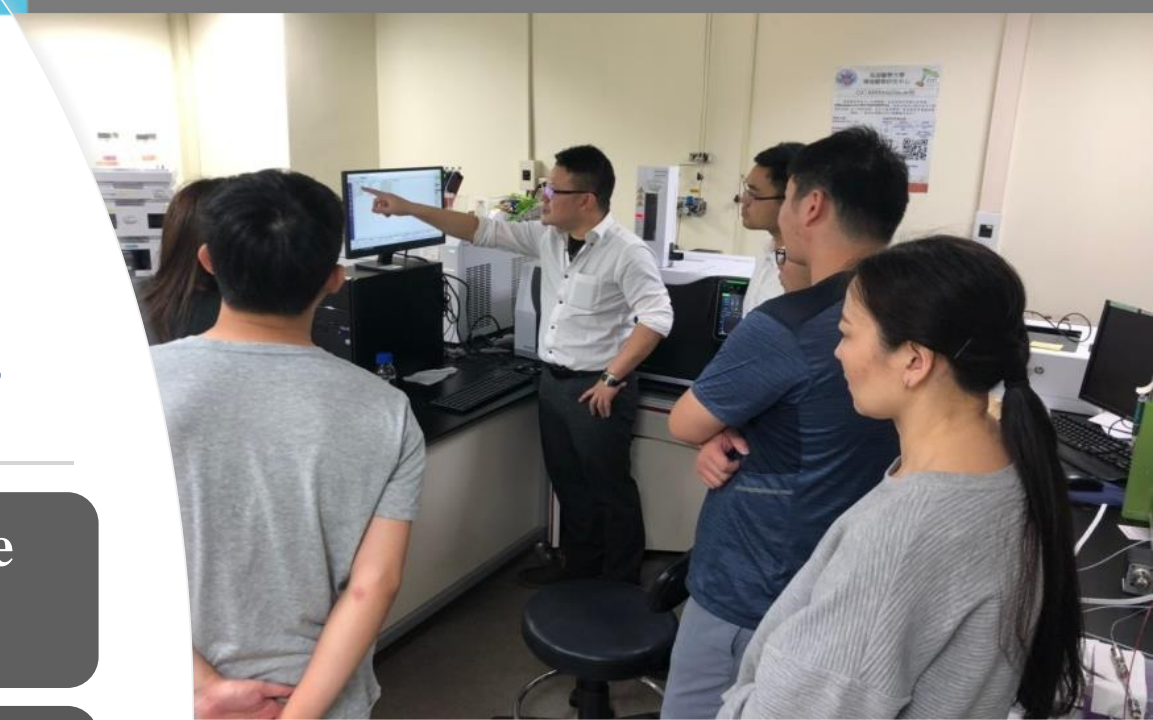
Bone, Tissue, Organoid, iPSC

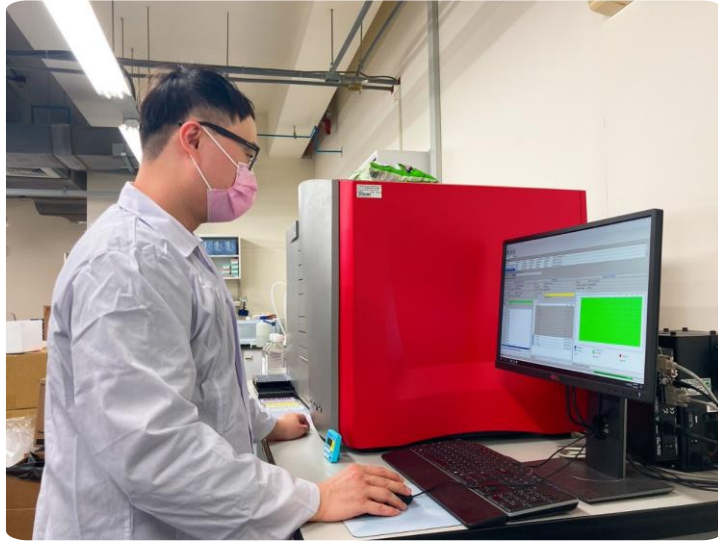
## Drug Development and Value Creation

New Drug Discovery,  
Technology Transfer

## Cancer Research

Prevention, Mechanism,  
Genetics & Epigenetics





# 8 Mission-Oriented Research Centers

Tropical Medicine and Infectious Disease

Applied Genomics

Medical Education and Humanizing Health Professional Education

Liquid Biopsy and Cohort

Long-Term Care

Neuroscience

Smart Healthcare

Big Data



# Nearly 150 International Partner Universities

## 6 University-level Partner Universities & Research Topics



# KMU Affiliated Organizations

## Kaohsiung Medical University



Since 1954

### Hospitals

### Long-Term Care Centers

**KMU Hospital**  
(1,720 beds)

**Municipal  
Siaogang  
Hospital**  
(500 beds)

**Municipal  
Ta-Tung  
Hospital**  
(479 beds)

**Municipal  
Cijin Hospital**  
(42 beds)

**KMU  
Gangshan Hospital**  
(350 beds)

**KMU  
Ta-Tung Chien-Kuo  
Elderly Day Care  
Center (30 pax)**

**Cijin Hospital  
Long-Term  
Residential Care  
Center (40+75 beds)**



Since 1957



Since 1998



Since 2009



Since 2014



2023 Estimated



2021 Estimated



2021/2023 Estimated



**高雄醫學大學**  
Kaohsiung Medical University

**INSPIRE  
TALENTS**

# Social Responsibility

## Medical Contribution Award

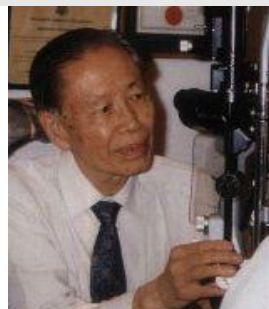
Health, Welfare & Environment Foundation, Taiwan

Issued in 1980 for special contribution to public health, patients and populations in aboriginal and remote areas. With the core value of “Respect for Life, Pursuit of Truth”, KMU has cultivated the most Award winners.

1990-2020:

**45** of the 293 winners are KMU faculty members or alumni.

- Distinguished Health Devotion Award: **5** winners
- Individual Health Devotion Award: **40** winners



# Research Highlights



# College of Medicine

## Website:

<https://cmed.kmu.edu.tw>

## Research Highlights

1. Regeneration Medicine
2. Cancer
3. Environmental Medicine

## Core Facilities

1. TissueFAXS
2. Micro-CT for Small Animals
3. 3D Bio-Printing for Bone Substitutes

Multi-Color Flow Cytometer



Confocal Microscope



TissueFAXS



# College of Dental Medicine

## Website:

<https://cdm.kmu.edu.tw>

## Research Highlights

1. CAD/CAM and Digital Impression
2. Dental Material Science Including Implant and Casting
3. Oral Cancer Research



## Core Facilities

1. Cerec 3D CAD/CAM System
2. X-ray Diffraction Machine (X光繞射分析儀)
3. Pure Titanium Casting Machine (純鈦鑄造機)





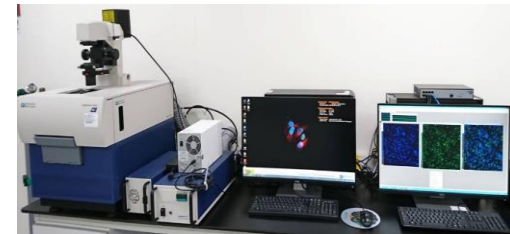
# College of Pharmacy

## Website:

<https://cpharmacy.kmu.edu.tw/>

## Research Highlights

1. Development of Albumin Nano Drug Carrier
2. Drug Discovery from Natural Products and Traditional Medicine and Pharmacological Studies
3. Pharmacoepidemiology Research in Well-Defined, Real-World, and Large Populations

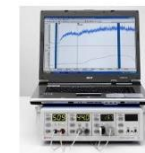


## Core Facilities

1. Varioskan Flash (Thermo)
2. Research and Test Platform of Innovative Translational Cosmetic
3. Natural Product Libraries and High-Throughput Screening Core



CK多功能皮膚檢測儀



都卜勒血流檢測儀



顯微鏡



VISA數位皮膚檢測儀



高效液相層析儀



連續波長微量整合荧光儀



# College of Nursing

## Website:

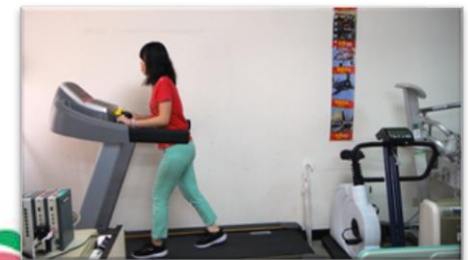
<https://conursung.kmu.edu.tw>

## Research Highlights

1. Health Promotion
2. Innovative Teaching
3. Chronic Illness Care
4. Cross-Professional Integration Care
5. Health Promotion in Long-Term Care for the Elderly

## Core Facilities

1. Basic Clinical Skill Center
2. Fundamentals of Nursing Practice Center
3. Multifunctional Simulation Center
4. Health Promotion Laboratory



**Website:** <https://chealth.kmu.edu.tw>

## Research Highlights

1. Preventive Healthcare and Medical Image
2. Long-term Care for Disabilities and Patients with Stroke
3. Healthcare Data Sciences and Artificial Intelligence
4. Emerging Technology Care/Service Core Facilities
5. Environmental and Genetic Factors Related to Asthma



## Core Facilities

1. 3D Motion Analysis System with HTC Vive VR
2. A Custom-Made Thermal Stimulation System
3. Magnetic Resonance Imaging Scanner
4. MAS 100-NT Bioaerosol Sampler
5. Robotics & IoT



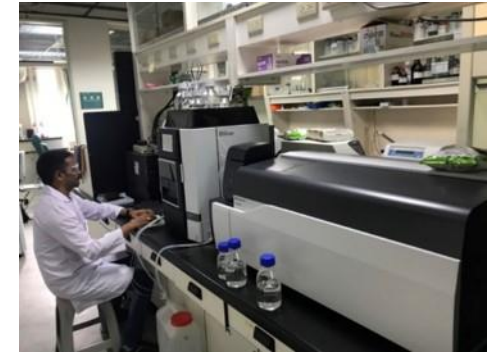
Website: <https://clife.kmu.edu.tw>

## Research Highlights

1. Zebrafish, A Vertebrate Model Organism
2. Organic and Medicinal Chemistry
3. Biochemistry and Molecular Biology
4. Physical Chemistry and Nanoscience
5. Inorganic and Material Chemistry
6. Analytical and Electronic Chemistry
7. Humanized Antibody Engineering
8. Entomology

## Core Facilities

1. Single-Crystal X-Ray Diffractometer
2. LC-MS-Mass Spectrometry





# College of Humanities and Social Sciences

Website: <https://hss.kmu.edu.tw>

## Research Highlights

1. Aging Society and Long-Term Care Policies
2. Gender Studies





# Center for General Education

Website: <https://cge.kmu.edu.tw>

## Research Highlights

1. Excellent in 2020 “Teaching Practice Research Program” (Ministry of Education).
2. Language Education
3. Disability Studies
4. Psychoanalysis
5. Nineteenth-Century American Literature



# Support for Faculty Member







# Remuneration



## Salary

-Comparable to Public Universities & Overseas Talent Recruitment



## Flexible Wage Award

-Junior Chair Scholar, Research Paper/Project Awards & Teaching Excellence Awards, etc.



## Year-end Bonus

-At Least 1.5 Months of Year-End Bonus is Given Annually



## Paid Personal/Sick Leave

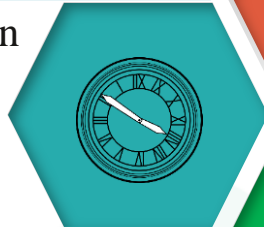
-7 Days of Paid Personal Leave and 30 Days of Paid Sick Leave are Given Annually



# New Faculty Member Support

## Reduced Teaching Hours

Up to 3 Hours Reduced in First 3 Years.



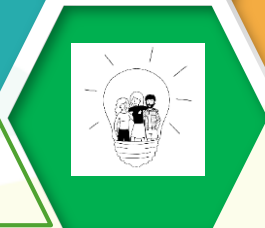
## Performance Enhancement

Abroad Further Study & Int'l Conferences Subsidies. Research Paper Award.



## Mentoring Program

Teaching and Research Mentors Appointed.



## Handbook for New Faculty Member

Resources and Regulations need to know.



# Research Fund

✓ **Startup Fund:**

Up to NT\$500,000

✓ **Intramural Project Grant:**

Up to NT\$1,000,000





# Family Support Package

Child Education Subsidy

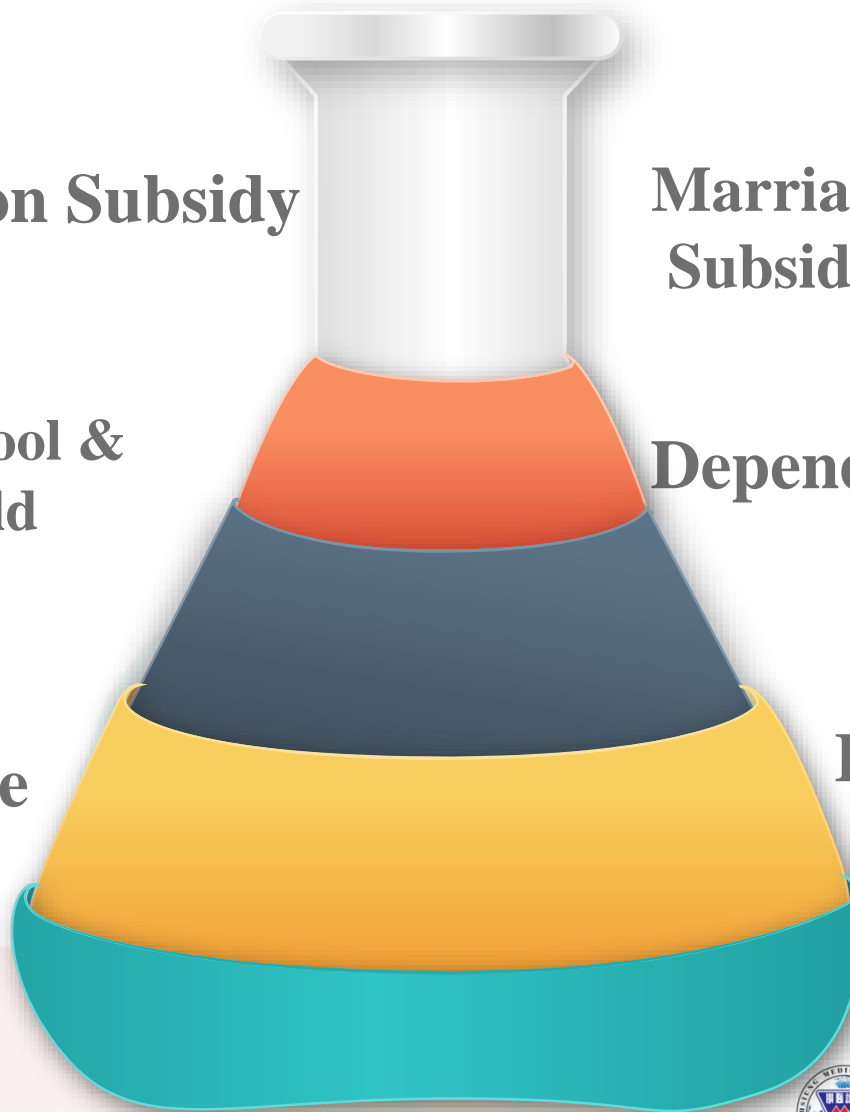
Marriage and Childbirth Subsidy

Affiliated Preschool & After-School Child Care Center

Dependent Medical Care

Parental Leave

Family Care Leave



# Secure Insurance & Retirement Protection

**Public Employee Insurance  
for Private Schools**  
(Formal Faculty Members)

**Labor Insurance**  
(Contracted  
Faculty Members)

**National Health  
Insurance**



**Retirement &  
Compensation Fund  
for Private Schools**

**Incremental  
Contribution**

**Pension Annuity**



# Healthy Worksite



# Career Development

**Resource Sharing/  
Interdisciplinary  
Collaboration Platform  
in KMU System**

**Teacher Mentoring Program/  
Professional Development  
Community**

**In-service Education/Study  
Subsidy**

**Diverse Appraisal/Promotion  
System**





# Contact Info

Contact	E-mail	Telephone
<b>Human Resources Office Head, M. J. Hsieh</b>	<b><a href="mailto:mjhsieh@kmu.edu.tw">mjhsieh@kmu.edu.tw</a></b>	<b>+886-7-3121101 Ext. 2065 / 2104</b>
<b>Office of Global Affairs Director, Y. F. Chen</b>	<b><a href="mailto:ciae@kmu.edu.tw">ciae@kmu.edu.tw</a></b>	<b>+886-7-3121101 Ext. 2860 / 2383</b>





*Join KMU !!*

*Contribute &  
Lead !!*



高雄醫學大學  
Kaohsiung Medical University

INSPIRE  
TALENTS